



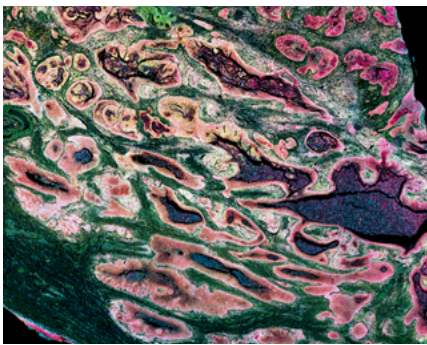
Uncompromised spatial.  
Only on Atera.



# Introducing Atera

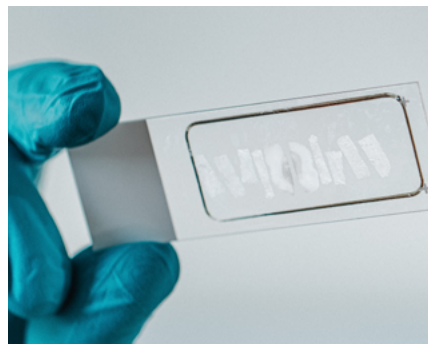
High throughput. Whole transcriptome. Single cell sensitivity. Unify these and you get what you've been waiting for: Atera, the first spatial biology platform that doesn't require you to compromise on performance, plex, or throughput.

The culmination of over a decade of spatial and single cell innovations, the Atera platform redefines what's possible with unmatched throughput, unparalleled performance, and unrivaled capabilities: all at whole transcriptome scale. Read on and explore how easy it is to go from tissue to data with a growing suite of multiomic capabilities, and user-friendly visualization and analysis software.



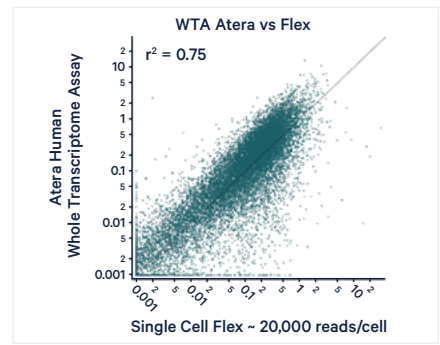
### Whole transcriptome analysis

Get the complete picture with whole transcriptome coverage of 18,000+ protein-coding genes.



### Unmatched speed and scale

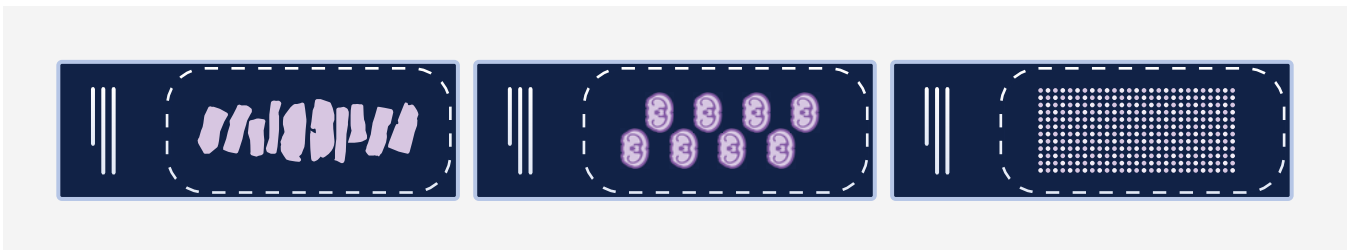
Maximize biological insights by analyzing up to 800 1 cm<sup>2</sup> whole transcriptome samples a year.



### Spatial at unparalleled sensitivity

Capture your biology in exquisite detail with five logs of sensitivity (equivalent to single cell assays). FFPE human testis tissue used here.

## Maximize your tissue with unmatched flexibility

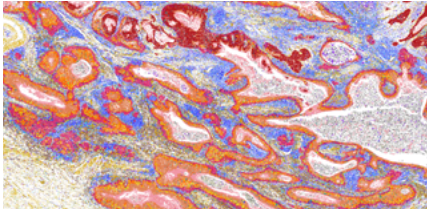


### Atera uses standard glass slides and maximizes imageable tissue area.

Analyze over 5 cm<sup>2</sup> of tissue per slide with flexible run formats of up to 4 slides per run. Whether you need to maximize the number of samples by running a tissue microarray, analyze large sections from a particularly interesting sample, or fit several dozen samples on a single run for a pilot study, Atera has you covered.

## See it all with panels built for your research

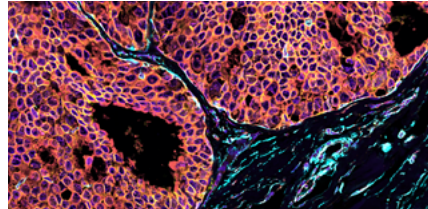
Whole transcriptome (WTA), targeted, custom, and everything in between: whatever you need from your panel, Atera has it. See how the Atera platform's powerful and flexible probe architecture lets you leverage:



### Atera WTA panels

*18,000 plex; stack up to 1,000 additional custom genes*

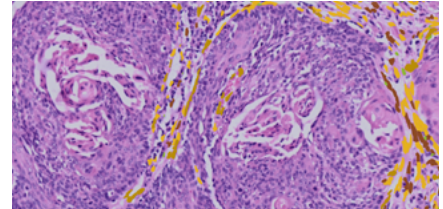
Capture a complete picture of your tissue with whole transcriptome coverage. Map cell-cell interactions, deeply characterize cell populations, ID biomarkers, and more. Then, add up to 1,000 additional targets with a custom stackable panel.



### Atera Select

*1,000-plex modular panels can be stacked up to 2,000-plex; 3,000-plex modularity coming soon*

Take advantage of our pre-designed 1,000-gene panels to validate your pathways of interest and target specific biology. Stack Atera Select pre-designed and custom panels to create novel assays to answer your most critical research questions.



### Atera custom panels

*Experimental applications as unique as your research*

Craft up to 1,000-gene panels for special applications in your research, including SNVs, gene isoforms, CRISPR guide RNAs, viral/bacterial/pathogen sequences, and more—all with our easy custom design tool.

## Spatial discovery power without the pain

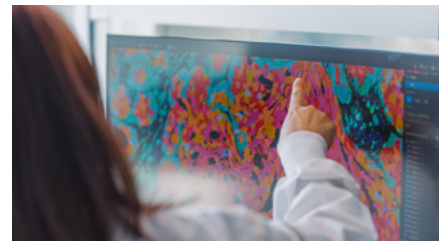
### Freedom to explore your regions of interest

Get ready-to-use data for each individual sample whether you run one tissue or hundreds of tissue microarray cores on a single slide.



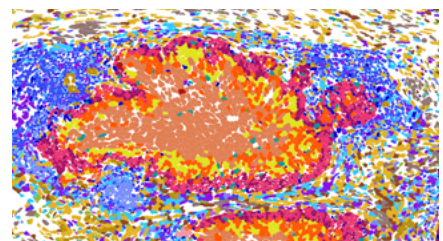
### Enhanced support for pharma and translational research needs

Big cohorts mean big data. Atera makes it easy to manage your data with automated data egress to 10x Genomics Cloud or third-party cloud services and instant transfer to collaborators.



### Incredible insights with interactive analysis

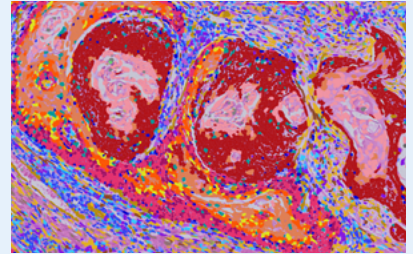
Get powerful insights without needing to use the command line. The user-friendly Atera software cloud analysis platform offers intuitive spatial analysis and visualization right in your web browser.



# See the power of Atera firsthand

In science, seeing is believing. We invite you to see the power of Atera spatial transcriptomics for yourself. Explore human cervical tissue in this interactive data demo and get a hands-on look at the platform that reshapes what's possible in spatial biology.

[See the demo](#) →



## Panels built for your spatial discovery needs

### Available Now

- Atera WTA Human
- Atera Select Human Multi-tissue and Cell Typing
- Atera custom panels (up to 1,000 plex)

### Coming Soon

- WTA panels for mouse and additional species
- Spatial proteomics
- Base-by-base sequencing
- Atera Select panels for species- and tissue-specific applications

## Atera specs



**Total analyzable tissue area/run** 20 cm<sup>2</sup> (2,000 mm<sup>2</sup>)

**Target genes/run**

Atera WTA: 18,000+  
(with option for 1,000 additional custom targets)

Atera Select: up to 3,000\*

- Stack up to 3x\* 1,000 gene panels
- Combine Atera Select and custom panels for novel spatial assays

\*up to 2,000 at launch, up to 3,000 coming soon

Learn more at [10xgenomics.com/platforms/atera](https://10xgenomics.com/platforms/atera)

### Contact us

[10xgenomics.com](https://10xgenomics.com) | [info@10xgenomics.com](mailto:info@10xgenomics.com)

© 2026 10x Genomics, Inc. FOR RESEARCH USE ONLY. NOT FOR USE IN DIAGNOSTIC PROCEDURES.  
LIT000614 - RevA - Atera brochure

